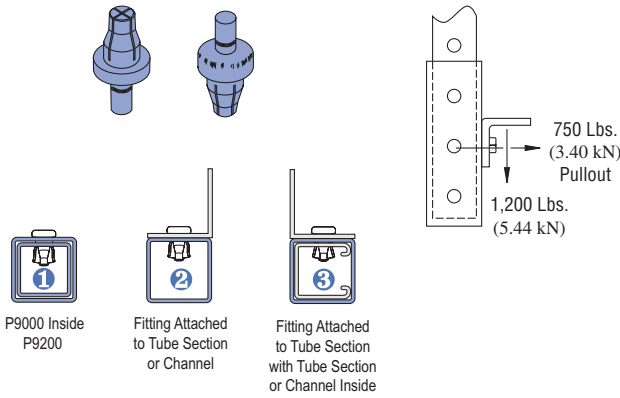




P9010

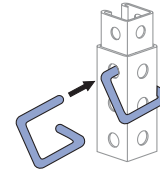
MULTI-GRIP RIVET



Wt/100 pcs: 10 Lbs (4.5 kg)

P9209

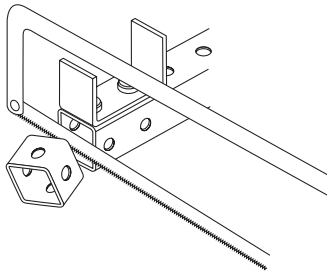
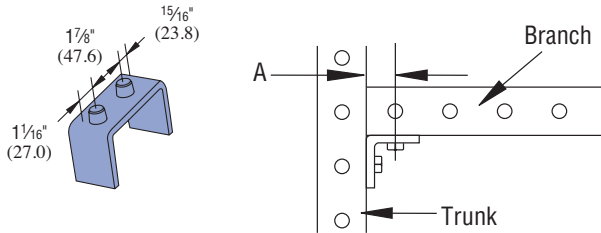
GRAVITY PIN



Wt/100 pcs: 47 Lbs (21.3 kg)

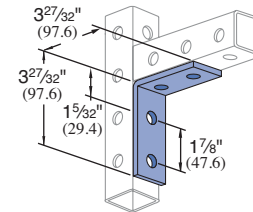
P9207

CUTTING ALIGNMENT GAUGE



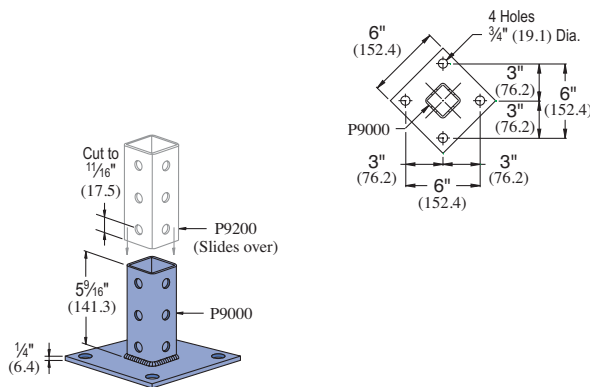
The cutting alignment guide ensures correct cutting of branch members when used with fittings to make connections. Refer to the table of page 70 for the appropriate value for "A" for cutting.

P9324



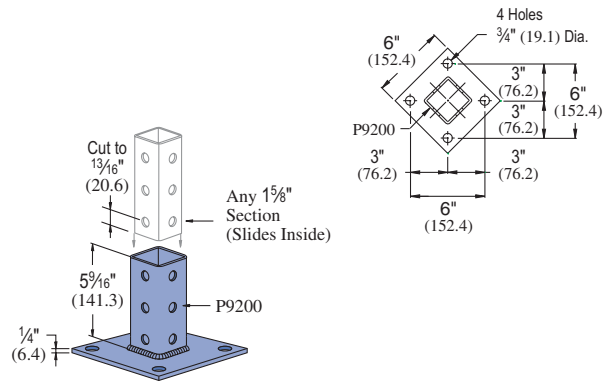
Wt/100 pcs: 78 Lbs (35.0 kg)

P9011



Wt/100 pcs: 332 Lbs (150.7 kg)

P9012



Wt/100 pcs: 340 Lbs (154 kg)

Standard Dimensions for 1 1/8" (41.3mm) width series channel fittings (Unless Otherwise Shown on Drawing)

Hole Diameter: 9/16" (14mm); Hole Spacing - From End: 1 3/16" (21mm); Hole Spacing - On Center: 1 7/8" (48mm); Width: 1 1/8" (41.3mm); Thickness: 1/4" (6mm)